

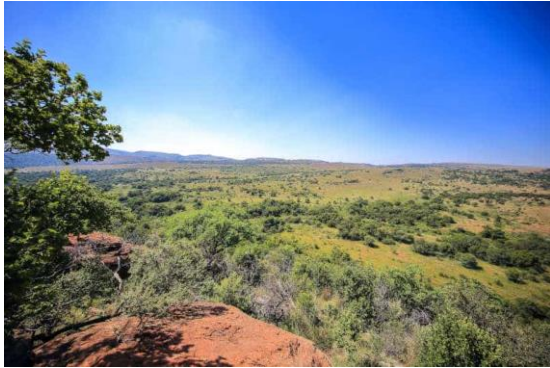
## Scatter Run #2: Event Details

**Sunday – 20<sup>th</sup> August 2023**

**B'sorah Farm, Broederstroom/Harties area**

-25.839505, 27.779832

**what 3 words:** [recruiters.country.scouted](http://recruiters.country.scouted)



### What is Orienteering

A competitive or non-competitive recreational activity in which participants use a map and compass to navigate between checkpoints along an unfamiliar route. **Scatter run: visit as many checkpoints as you can in your allotted time**

### Important information

- B'sorah consists of open rocky bushveld, some wooded/semi-wooded areas and rocky koppies with a network of tracks and paths. Navigation is moderate to tricky and a compass and leg protection are highly recommended.
- Toilets available close to the parking/start/finish area.
- There will be no water out in the area. Please arrange to carry your own for the duration of the event.

### Entries

Go to [www.orienter.co.za](http://www.orienter.co.za) (on PC or Mobile Device) to enter. Create a profile if you don't have one. **You must pay within 1 hour of entering or your entry will be deleted.**

Entries Close

Thursday 17<sup>th</sup> August – midnight; Final instructions will be sent out on Fri 18<sup>th</sup> Aug.

### Courses

60 minutes

90 minutes

180 minutes

### Prizes

**Competitors entering all 3 events will receive a branded Scatter run water bottle (per person) to be collected at the final at Hazeldean Valley on 17<sup>th</sup> September; Prizegiving (category winners and lucky draw) at 11h20**

### Start Times

180 min event

8h00

Please collect your hired EMIT timing chip at the registration table at least 20 minutes before you start time.

90 min event

9h20

Briefing for each start group 10 minutes before your start time. **It is important**

60 min event

9h45

**that you attend the briefing to receive the latest information about the race.**

Costs	Individual	Team of two	Additional people
180 min event	R220 per person	R440 per team	R110 per person
90 min event	R195 per person	R390 per team	R110 per person
60 min event	R175 per person	R350 per team	R110 per person

### General Information

For more information about Orienteering or the Rand Orienteering Club visit our website [www.roc.org.za](http://www.roc.org.za)  
**For further information about Scatter run visit [www.scatterrun.co.za](http://www.scatterrun.co.za)**

Planner

Nicholas Mulder [nicholas@marquest.co.za](mailto:nicholas@marquest.co.za) 082-898-7871

Controller and inquiries

Ian Bratt [ianbratt@global.co.za](mailto:ianbratt@global.co.za) 082-8876611

**NO Refreshments will be on sale so please bring your own.** Area used by kind permission of Nicholas Durr/B'sorah Magaliesberg Activities – B'Sorah Luxury Tented Camps, Hartbeespoort Dam ([bsorah.com](http://bsorah.com))