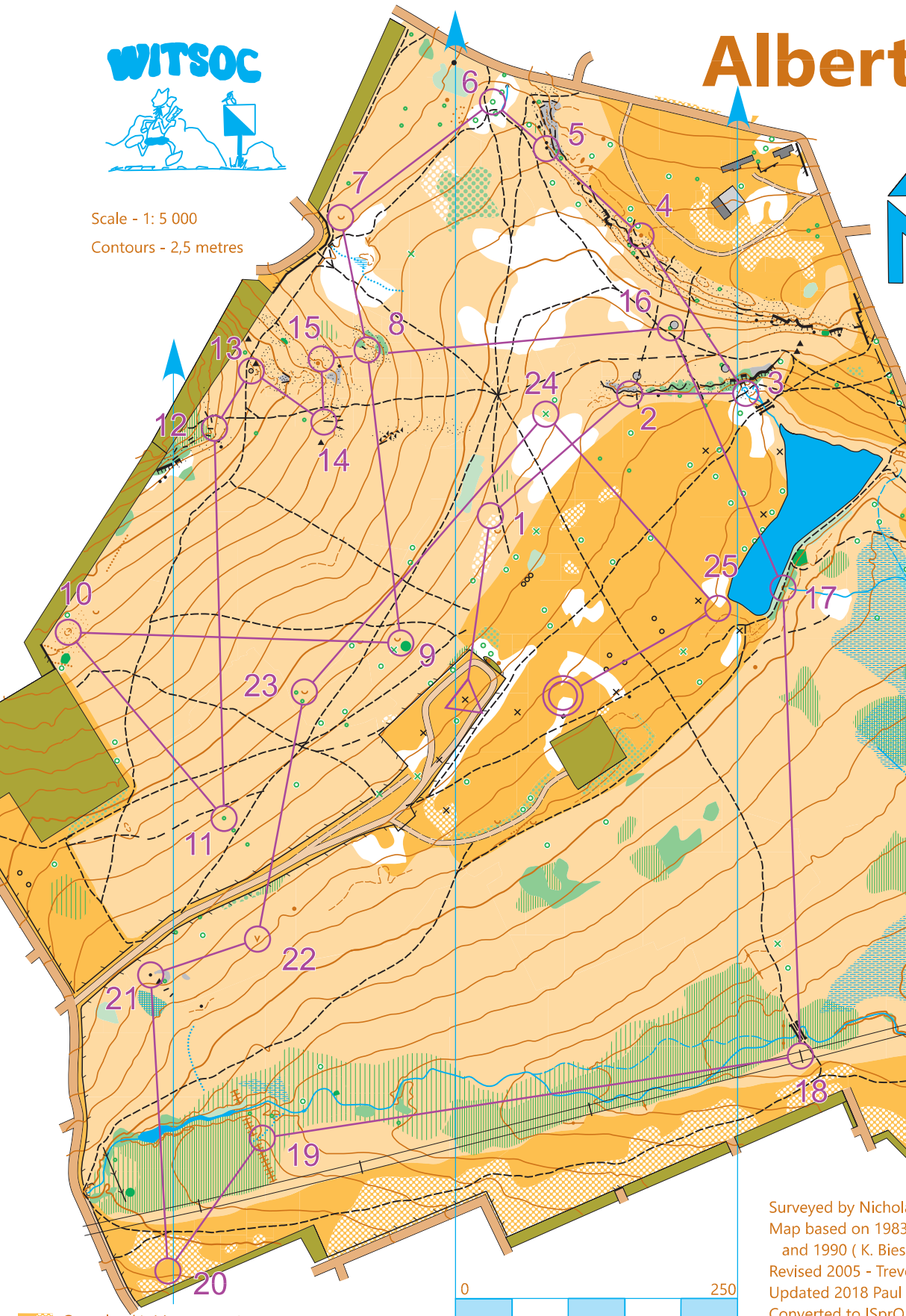




Scale - 1: 5 000  
Contours - 2,5 metres



| Alberts Farm O Track |        |   |   |   |
|----------------------|--------|---|---|---|
| Long                 |        |   |   |   |
| Long                 | 5.3 km |   |   |   |
| 1 31                 | ☼      |   |   | ○ |
| 2 32                 | E      |   |   |   |
| 3 33                 | W      | / | X |   |
| 4 34                 | ↓      | ● |   |   |
| 5 35                 | ↓      | ▲ |   |   |
| 6 36                 |        | △ |   |   |
| 7 37                 | U      |   |   |   |
| 8 38                 | E      |   |   |   |
| 9 39                 | U      | ☼ |   |   |
| 10 41                | U      |   |   |   |
| 11 40                | ☼      |   |   |   |
| 12 42                |        | E |   |   |
| 13 63                | U      | ○ |   |   |
| 14 43                | E      |   |   |   |
| 15 45                | U      |   |   | o |
| 16 66                | ☼      |   |   |   |
| 17 46                | U      |   |   |   |
| 18 47                | ☼      |   |   |   |
| 19 48                | U      |   |   |   |
| 20 49                | ○      |   |   |   |
| 21 50                | ▲      |   |   |   |
| 22 51                | V      |   |   |   |
| 23 54                | U      |   |   |   |
| 24 64                | X      |   |   |   |
| 25 65                |        |   |   | ○ |

Surveyed by Nicholas and Pieter Mulder, 1997/8  
Map based on 1983 (A. Mason), 1985 (P. Mulder)  
and 1990 (K. Biesheuvel / R. Lambert) maps  
Revised 2005 - Trevor Pope  
Updated 2018 Paul Wimberley  
Converted to ISprOM2019 Paul Wimberley

- ☼ Open land / with scattered trees
- Open land with scattered bushes
- Rough open / with scattered trees
- Rough open with scattered bushes
- Forest
- Forest : slow running
- Forest : difficult to run
- Vegetation : difficult to walk
- Undergrowth
- Settlement
- Bare rock
- Major road
- Minor road
- Vehicle track
- Footpath
- Small footpath
- Indistinct footpath
- Footbridge
- Concrete platform
- Tree / Bush / Root
- Stock
- Uncrossable fence
- Crossable fence
- Major powerline
- Building
- Impassable rock face
- Passable rock face
- Boulder
- Boulder Cluster
- Stony ground
- Contour
- Form line
- Embankment
- Earthwall
- Gully
- Dry ditch
- Pit
- Rootstock
- Misc. objects
- Lake
- Pond
- River / stream
- Minor water channel
- Indistinct marsh
- Narrow marsh
- Water tap
- Knoll - small, large
- Depression - small, large
- Broken ground

