



sport & recreation
Department:
Sport and Recreation South Africa
REPUBLIC OF SOUTH AFRICA

Gauteng Orienteering Championships 2021

30 – 31 October 2021

WALKER FRUIT FARMS - ARBORETUM

South Rand (Meyerton)

Bulletin 2

NOTE CHANGE OF DATES

Organised by the Rand Athletic Club Orienteers (RACO)

On behalf of the Gauteng Orienteering Clubs

With kind permission Darryl Peper

Planner (Middle & Long):	Paul Wimberley	pwimby@vodamail.co.za
Controller (Middle & Long):	Margeret Archibald	zigarch@gmail.com
Event Director:	Pat de Klerk	patdeklerk@mweb.co.za
Phone:	+27-73-200-1969	+27-11-793-5380
Website:	www.racorienteers.co.za	



Proposed Programme

Saturday 30th October : Middle distance
Starts from 12:00

Sunday 31st October : Long Distance
Starts from at 09:00

Entries

Will be available on www.OriEnter.co.za

From 20 September and close 22 October !

Entry Fees are payable in full before entry deadline

Entry Fees

Entry Options:	Seniors:	Juniors (<21):	Groups:
Gauteng Championship courses for 2 days (Long & Middle)	R260	R140	n/a
Gauteng Championship course for 1 day (Long or Middle)	R130	R70	n/a
Novice and Non-Championship courses (per day)	R120	R60	R170
Emit Card Hire (per day)	+R20	+R20	+R20

* Note that a landowner fee per person for each day is included in the Entry Fees

NOTE: All courses are strictly pre-entry only

Classes

M/W12, M/W16, M/W20, M/W21(E), M40, M50, M60, M70,M80 W35, W45, W55, W65, W75
M/W21A (non-championship) and Novice courses for non-SAOF members and Groups
will be provided on both days

Championship Eligibility

Competitors on Championship courses must be members of a club affiliated to the SAOF. Only members of a club affiliated to the SAOF and who have been resident in South Africa for six months will be eligible for Championship trophies/medals (as per SAOF competition rule 4.1).

COVID Procedures

The entire event will be held in compliance with the

“SAOF COVID-19 PARTICIPATION CODE OF CONDUCT”

In line with the appropriate National Covid Restriction Level at the time

Event Centres

The main event centre is situated at the Walker Fruit Farm - Arboretum Farm, Meyerton. Parking available.

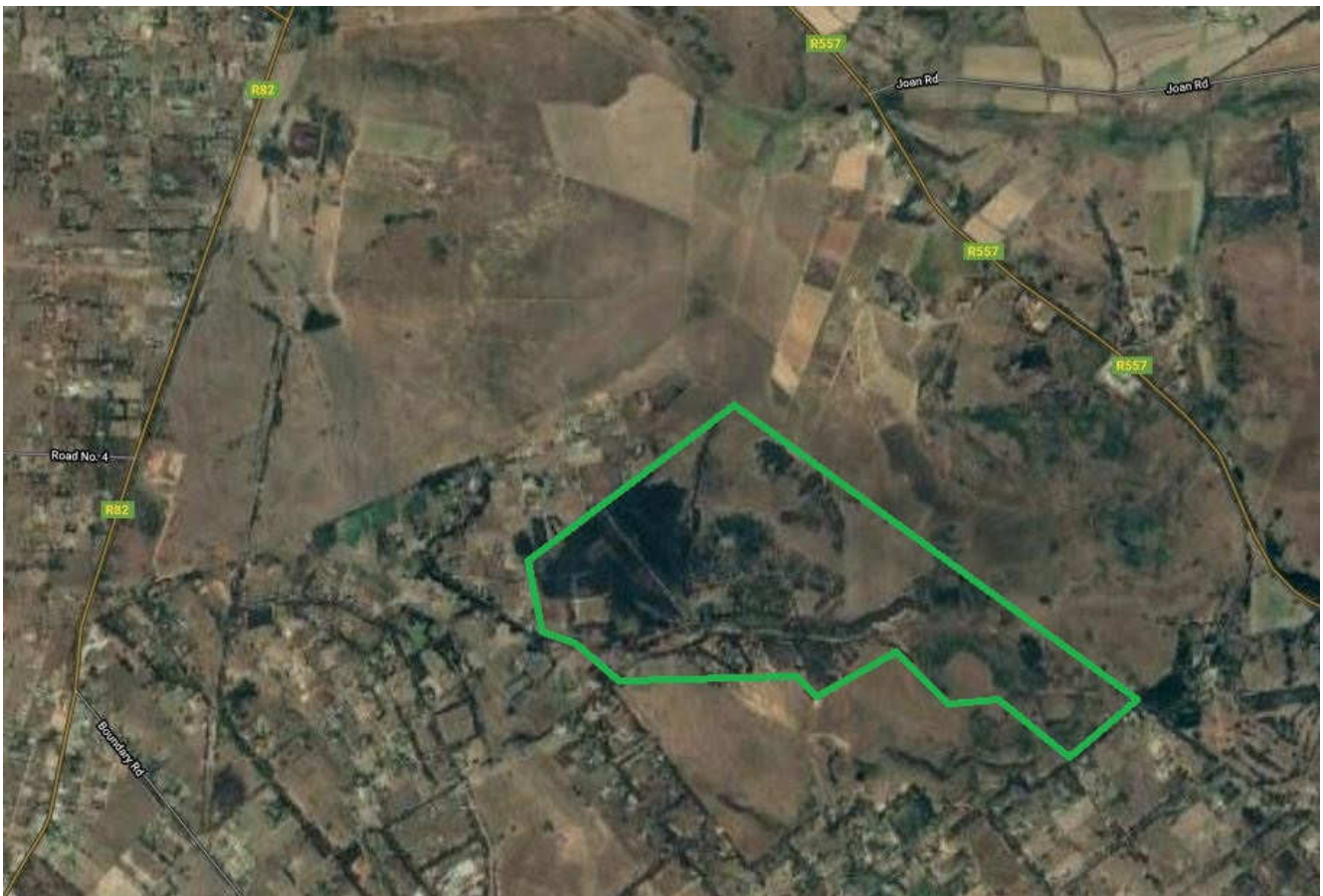
Competition areas

The **Medium** and **Long Distance** events take place in a (400Ha) area, with typical bushveld, some indigenous forest, thickly wooded areas and open fields. There are areas of thick thorn bush.

Embargoed areas

With immediate effect the Walker Fruit Farm is out of bounds to all persons competing at the GOC Championships

General map of the area



Directions to the venue will be provided in the Final Bulletin

Climate

The climate is moderate at this time of the year, with average temperatures ranging from 2°C at night to around 20°C during the day. Little to no chance of rain is expected.

Hazards

There are no dangerous animals in the competition area, although competitors may encounter various species of buck and other small animals. Protection against ticks is advised. There are areas of thick thorn bush, requiring leg protection.

Accommodation

There are no accommodation facilities near the event centre or competition area.

Competition clothing:

There is no restriction on competition clothing. However, leg protection is advised for both events.

Electronic Timing System

The EMIT timing system will be used. EMIT cards will be available for hire for the entire event. (Indicate requirement on Entry)

Start Lists

These will be published in the Final Bulletin and distributed to all entrants via email on the Wednesday before the event

Results

Full results will be electronically available as soon as practicable after each competition closes

Prize-giving

There will not be a Prize-giving at the event, but Championship trophies will be awarded at the annual GOC Lunch and Awards Ceremony

Refreshments

There will not be any catering at the Event Centre either day. Competitors are advised to also carry their own water when on the courses

Toilets

There are toilet facilities at the Event Centre

Medical

There will be First Aid available at the Event Centre throughout the competition. The nearest fully equipped hospital is situated in Vereeniging (Mediclinic – Cnr Joubert Street & Hofmeyer Avenue)

Indemnity

By entering this event you hereby acknowledge that you compete at your own risk and indemnify the landowners, event organizers, officials and the Rand Athletic Club Orienteers of any responsibility for any loss, injury or damage incurred whilst participating at Arboretum Farm